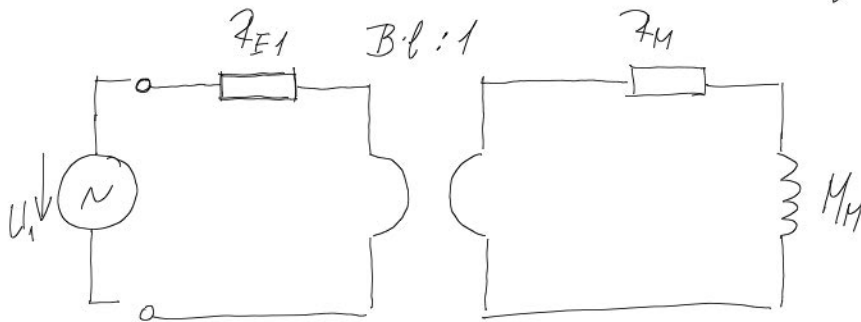


Príklad: Elektromechanické analogické schéma



$$R_{E1} = 10 \Omega$$

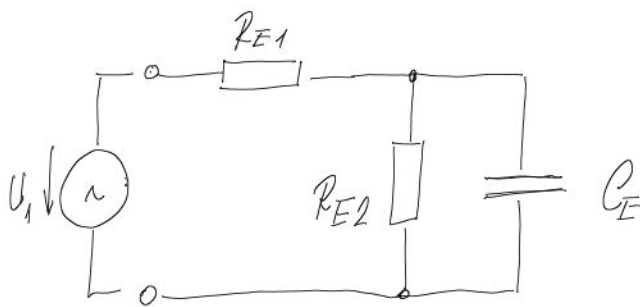
$$R_M = 10 \Omega_M$$

$$M_M = 0.1 \text{ kg}$$

$$Bl = 20 \text{ Tm}$$

$$U_1 = 10 \text{ V}$$

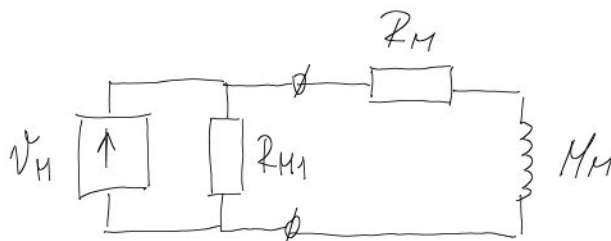
a) elektrické náhradné schéma



$$R_{E2} = \frac{(Bl)^2}{R_M} = \frac{20^2}{10} = 40 \Omega$$

$$C_E = \frac{M_M}{(Bl)^2} = \frac{0.1}{(20)^2} = 2.5 \cdot 10^{-4} \text{ F}$$

b) mechanické náhradné schéma



$$R_{M1} = \frac{(Bl)^2}{R_{E1}} = \frac{400}{10} = 40 \Omega_M$$

$$v_M = \frac{U_1}{Bl} = \frac{10}{20} = 0.5 \text{ N m s}^{-1}$$